

Routing Trucks Through Georgia: Avoiding Posted and Restricted Bridges

Last Updated: 03/30/2020

Posted and restricted bridges limit the load weight on truck travel. These limits notify truck drivers of the maximum weight the bridge is designed to carry.

Posted Bridges - Road signs are posted indicating the type of truck and corresponding weight limits along the road in the direction of travel approaching a posted bridge. The 00 on the signs as depicted below indicates that type of vehicle is not currently posted. The numerical values beside each truck indicate the legal limit for that truck.

Restricted Bridges – Pursuant to Governor Kemp’s Executive Order dated March 14, 2020, to facilitate the uninterrupted supply of goods and other emergency related materials, vehicles obtaining permits for weight under this Executive Order shall not cross posted bridges nor other restricted bridges as indicated in the in the link. For other permit dimensions refer to the Georgia Oversize Truck Route Map.

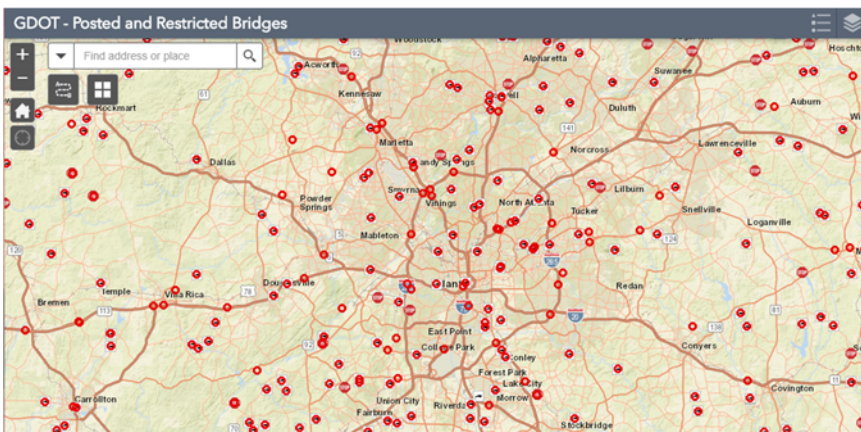
The Georgia Department of Transportation (GDOT) requires trucks that contain loads over the posted or restricted weight limit to take an alternate route. For truck drivers, this may require planning the route in advance to avoid posted or restricted bridges.

The following instructions are designed to allow a truck driver or other commercial carrier to identify posted or restricted bridges along their route and find routes to avoid posted or restricted bridges.

These instructions allow anyone to perform these steps on a computer with Internet access.

Application Access

1. **Open an Internet Browser** such as Chrome, Safari, Edge, or Firefox
2. **Go to the following URL:**
<http://gdot.maps.arcgis.com/apps/webappviewer/index.html?id=feb10df235ba48fc82a80dad165a3d63>
3. A map will display containing Posted and Restricted Bridges

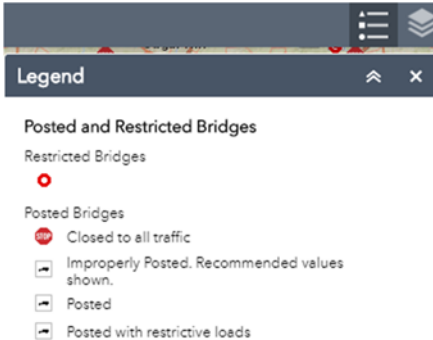


View Legend

1. In the upper right of the map, you will see a stacked icon for the Legend. The legend describes the meaning of the symbols or icons shown on the map.
2. Click the **Legend** icon and the Legend will display

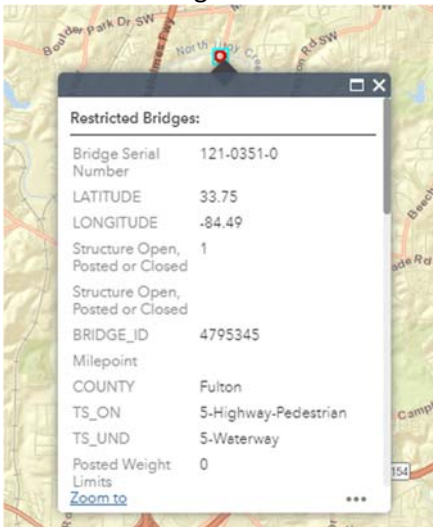


3. Click the **double arrows** to collapse the Legend or click the **X** to close the Legend



Identify a Posted or Restricted Bridge

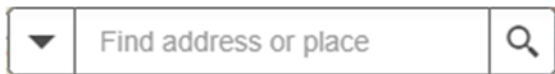
1. Click on a **symbol** representing a Posted or Restricted bridge
2. This will launch a pop-up window which can be scrolled up or down to see the data attributed to the location of the bridge feature.



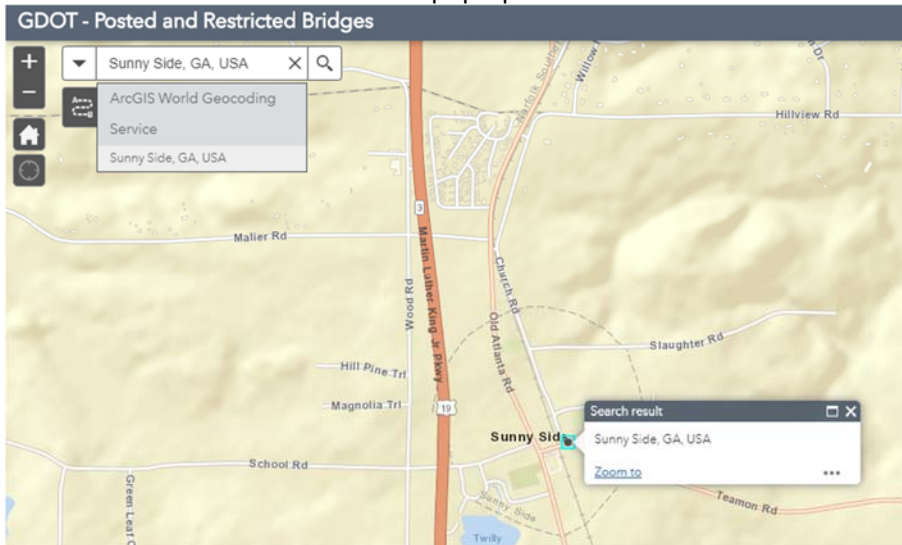
3. Click **Zoom to** for the map to move to that bridge location
4. Close the pop-up window by clicking on the **X**

Search for a Place

1. In the search bar, type an address or place

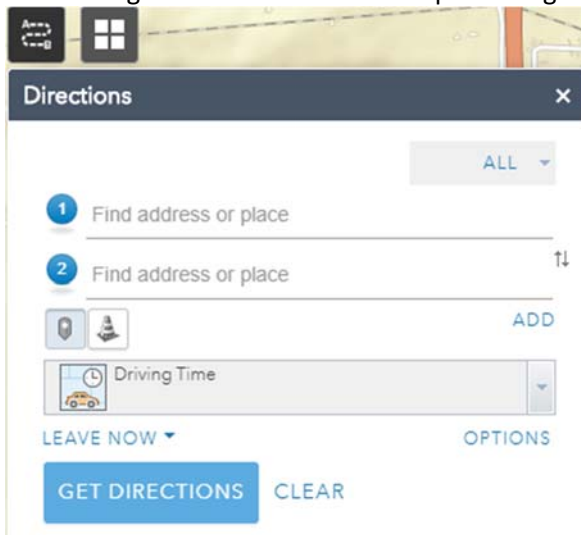


2. Click the **Search magnifying glass** or **hit the enter key**
3. A listing of potential matches will display
4. Select the desired option from the list
5. The map will then zoom to that location on the map
6. Click **Zoom to** for the map to move closer to that location
7. Click the **X** close the search pop-up



Get Directions

1. Click the Directions icon to find point to point driving directions from a commercial (Esri) internet service. These are just driving directions and **not** officially designated or approved driving routes. The directions merely provide a navigation aid to route planning to avoid possible Posted and Restricted Bridges. All drivers must adhere to the regulations and restrictions pertaining to their legally permitted route.



2. Enter in an address or location for your start and ending location or select it from the map
3. Click **ADD** to add more stops or destinations along the driving directions as needed

Directions

ALL

1 28-34 Teamon Rd, Hampton, Georgia, 30228

2 Crowder Rd, Williamson, Georgia, 30292

ADD

Driving Time

LEAVE NOW

OPTIONS

GET DIRECTIONS CLEAR

00:18 18 min typically
hr min 13.43 miles

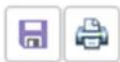
1. Start at 28-34 Teamon Rd, Hampton, Georgia, 30228
2:32 PM GMT-0400
2. Go west on Teamon Rd toward Church Rd
0.06 mi
3. Turn right on Old Atlanta Rd then turn left on School Rd
2.55 mi - 4 min
4. Turn right on Minter Rd then turn left on Covington Rd
1.18 mi - 1 min
5. Turn left on Steele Rd
0.13 mi
6. Turn right on Sandra Norton Rd
0.18 mi
7. Turn right on Birdie Rd
1.66 mi - 3 min
8. Turn right on Fayetteville Rd GA-92
0.47 mi - 1 min

4. Destinations can be dragged up or down or flipped to have them in the desired sequential order of travel
5. Use the pull-down to select **Truck Travel Time or Truck Distance** if needed to see driving directions optimized for this mode of travel

Trucking Time

Trucking Distance

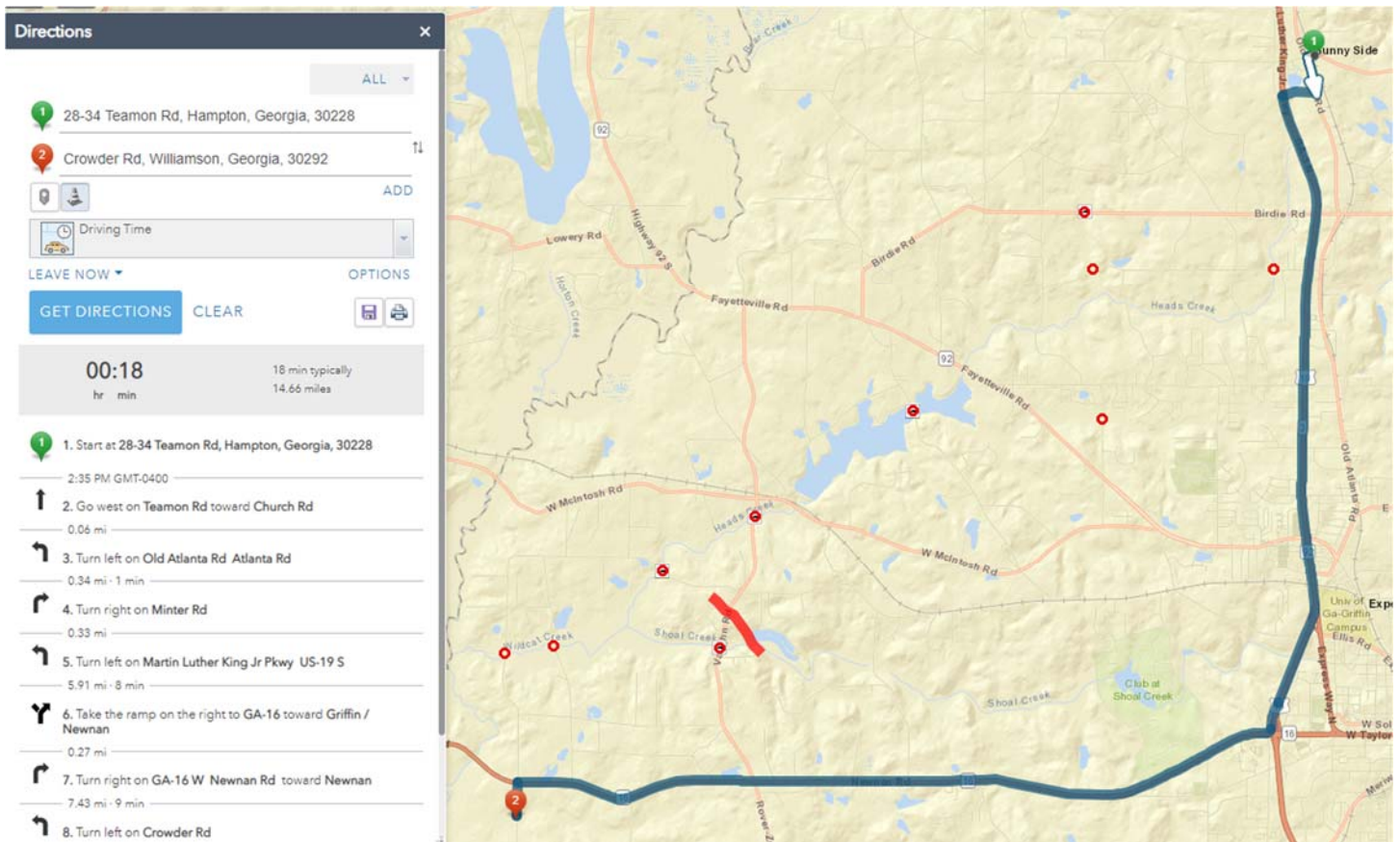
6. Click **Get Directions** to generate a listing of directions. The map now proposes a possible set of directions for travel. Directions can then be saved or printed by clicking on their respective icons.



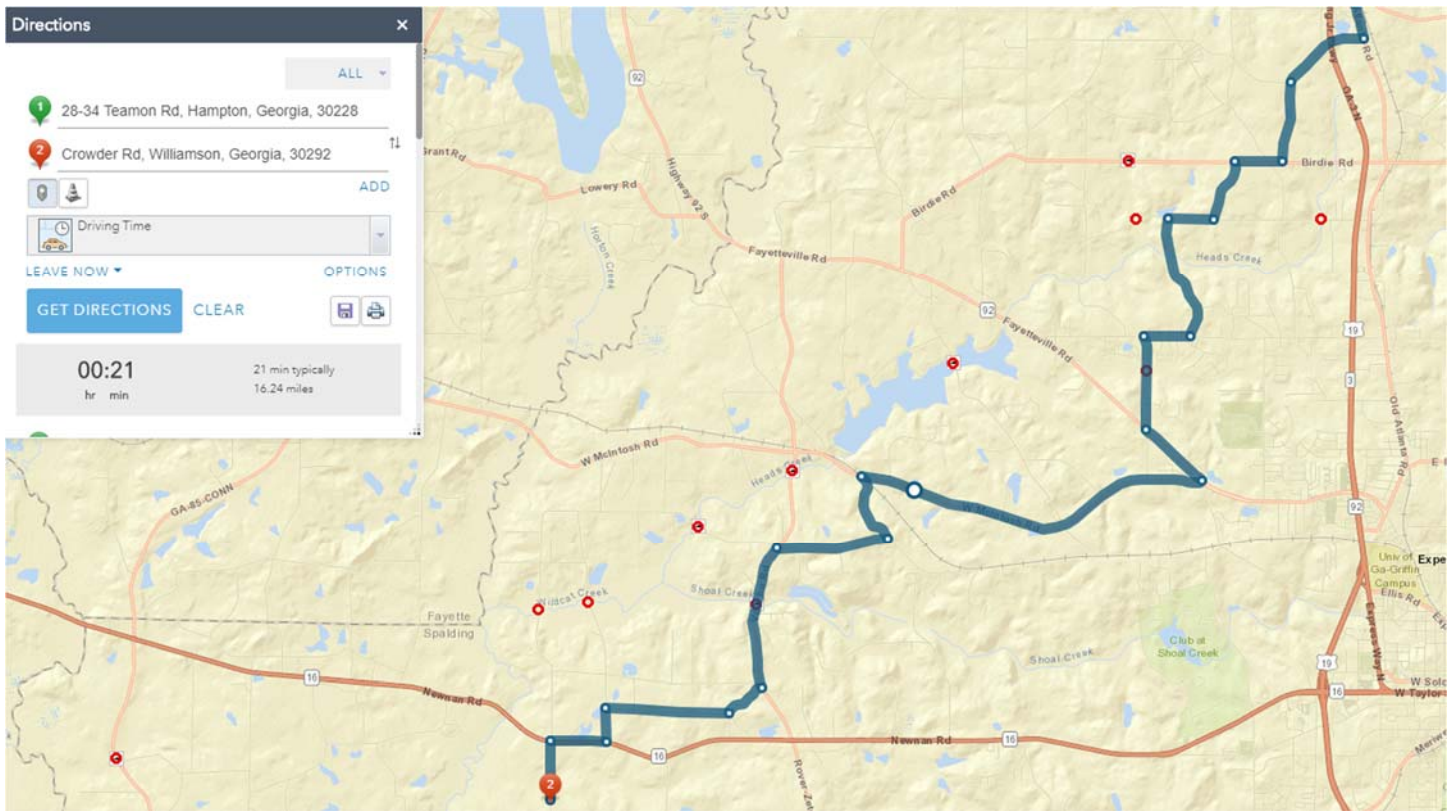
7. Review the driving directions and see if there are any Posted or Restricted Bridges along the driving directions
8. Change your planned driving directions
 - a. Use the Barrier traffic cone icon to draw barriers on the map to recalculate driving directions



- i. Click the Barrier traffic cone icon
- ii. Draw on the map by holding your mouse down then releasing to indicate an area that you do not wish to travel



- iii. The driving directions will recalculate and provide another option
 - iv. Repeat drawing Barriers on the map as needed
 - v. Click the CLEAR on the Directions dialogue box to clear the driving directions and barriers from the map
- b. Drag the white dots on the driving directions to recalculate
- i. In this option, hover over the driving directions and white dots should appear at the intersections
 - ii. Drag a white dot to another intersection



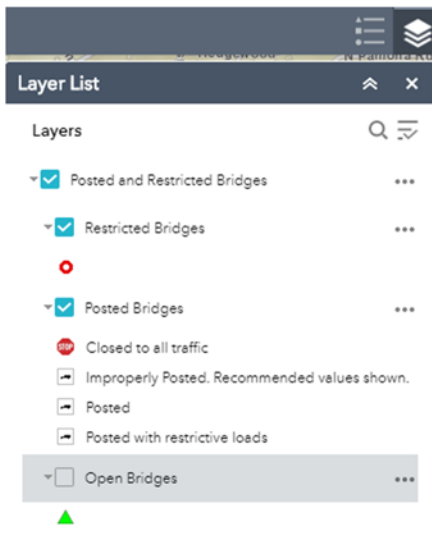
- iii. The driving directions will recalculate and provide another option
- iv. Repeat dragging the dots as needed
- v. Click the **CLEAR** on the Directions dialogue box to clear the driving directions from the map

View Layers

1. In the upper right of the map, you will see a stacked icon for the Layers. This contains data that can be displayed or hidden from display on the map.



2. Click the icon and the Layers will display
3. Expand the **small arrow** to see the Layers available
4. Layers with a check mark are turned on, layers without a check mark are turned off or hidden. Check the box to show or hide a layer.



5. Expand the **small arrow** further to see the Legend for the layers
6. Click the **double arrows** at the top where it says Layer List to collapse the Layer List or click the **X** to close the Legend



View or Export Tabular Bridge Data

1. The tabular data for the bridges can viewed, sorted, filtered, or exported to a CSV file.
2. Click the Open the Attribute Table icon

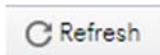


3. A table for the data will be displayed

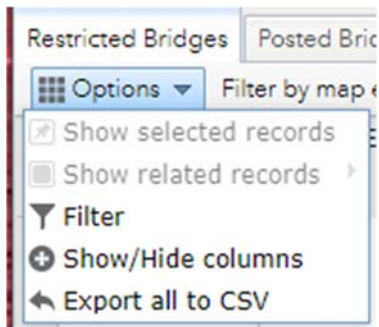
Bridge Serial Number	LATITUDE	LONGITUDE	Structure Open, Posted or Closed	BRIDGE_ID	COUNTY	TS_ON	TS_UND	Posted Weight Limits	Description	Photos
001-0033-0	31.86	-82.15	7	4797725	Appling	1-Highway	5-Waterway	1	TEN MILE ROAD at TEN MILE CREEK, 10 MI NORTH OF SURRENCY	1
001-0042-0	31.54	-82.14	7	4800832	Appling	1-Highway	5-Waterway	1	LAKE CHR. CH ROAD at COLEMANS CREEK, 12.9 MI SE OF	1

1805 features 0 selected

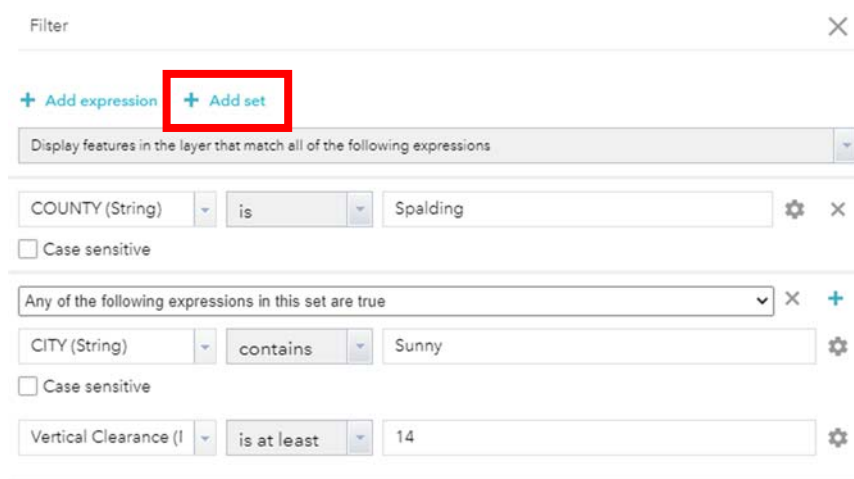
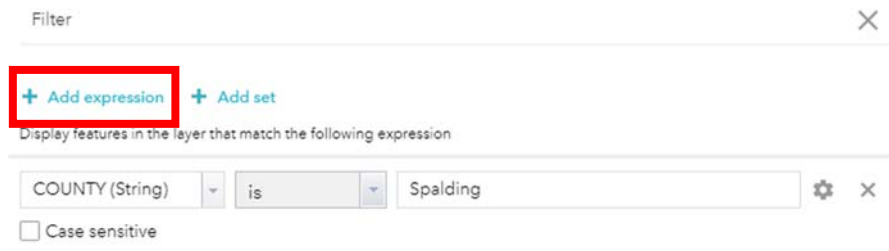
4. If the table is not displaying, click the Refresh icon



5. The size of the table can be made larger by dragging the top of the table up or smaller by dragging it down
6. Each tab refers to a data set on the map, click the tab to see its respective data
7. Use the left-to-right scroll bar to see additional items in the table
8. Click the column heading to sort the table by the column
9. Click the **Options** to filter
 - a. A pop-up window will display



b. Add a single expression or add a set (of filters)



- c. Select the Attribute or column from the pull-down list in which to filter the data
- d. Select an expression from the pull-down list
- e. Add a value to filter the data
- f. Click **OK** to view the data table by the filter
- g. Click the Selection handle on the left of the row to select the line in bright blue
- h. Hold down the **CTRL** key on your keyboard to select more rows in clicking on the selection handle
- i. Click **Zoom to** in the table to pan the map to the selected records
- j. The selected records will highlight in bright blue on the map

GDOT - Posted and Restricted Bridges

Bridge Serial Number	LATITUDE	LONGITUDE	Structure Open, Posted or Closed	BRIDGE_ID	COUNTY	TS_ON	TS_UND	Posted Weight Limits	Description	Photos	Report	Congressional District	House District	Senate District
255-0030-0	33.24	-84.49	7	4801551	Spalding	1-Highway	5-Waterway	1	HOLLONVILLE ROAD at LINE CREEK TRIB. 12 MI W OF GRIFFIN	1	1	003	073	016
255-0031-0	33.21	-84.20	7	4799687	Spalding	1-Highway	5-Waterway	1	McDONOUGH ROAD at BUCK CREEK TRIB. 4 MI SE OF GRIFFIN	1	1	003	130	016

32 features 12 selected

k. Click **Clear selection** to clear the selected values

10. Click the **Options** to Export all to CSV

Export to CSV ✕

Export data to CSV file?

- a. Select **OK** to Export data to CSV file or click Cancel or click the **X** at the top of the window to close the prompt
- b. The data will download within the browser and show an icon with prompts to open the file
- c. After opening the file, the file can then be saved locally to your computer
- d. A CSV file is best viewed in Excel, OpenOffice Calc, or Google Docs

Disclaimer

Driving directions are provided from Esri as a commercial Internet service to recommend possible directions of travel from point to point locations. These are just driving directions and not officially designated or approved permitted routes. The directions merely provide a navigation aid to route planning to avoid possible Posted and Restricted Bridges. All drivers must adhere to the regulations and restrictions pertaining to their legally permitted route. Esri legal limitations of liability and terms of use of their service can be found here: <https://www.esri.com/en-us/legal/overview>

All Georgia Department of Transportation (GDOT) data and products are provided “as is” and represents the highest quality of information available in the Department at the date of issue. Every effort is made to provide accurate and reliable information, but it is still possible that errors exist. No warranties or guaranties are expressed or implied with respect to the use of data or products received from the GDOT; including (without limitation) any implied warranties of merchantability or fitness for a particular purpose. In no event will the Georgia Department of Transportation be liable to you or to any third party for any direct, indirect, incidental, consequential, special or exemplary damages or lost profit resulting from any use or misuse of this data. Use of this data or product by the recipient(s) is solely at the risk of the recipient(s).

The GDOT, shall be cited in providing GDOT data or products used in the creation of reports, studies, proposals and any similar documents.

The data and products, including maps, provided by the GDOT, remain the sole property of the State of Georgia and may not be altered or transformed without written consent from GDOT. Under no circumstances may the data or products provided by GDOT, be sold to anyone or any entity. The GDOT, retains all legal rights to pursue violators of these Conditions of Use with the jurisdiction set within the State of Georgia.